



# PERU

**WSU School of Medicine**

**WHSO M1 Trip**

# **LOCATION:**

- **Ollantaytambo, Peru**
- **Patacancha Valley, Peru**

# **COUNTRY OVERVIEW:**

- **Capital city of Lima, Peru**
- **Spanish, Quechua**
- **30% below poverty line**
- **Incan Empire, Machu Picchu**

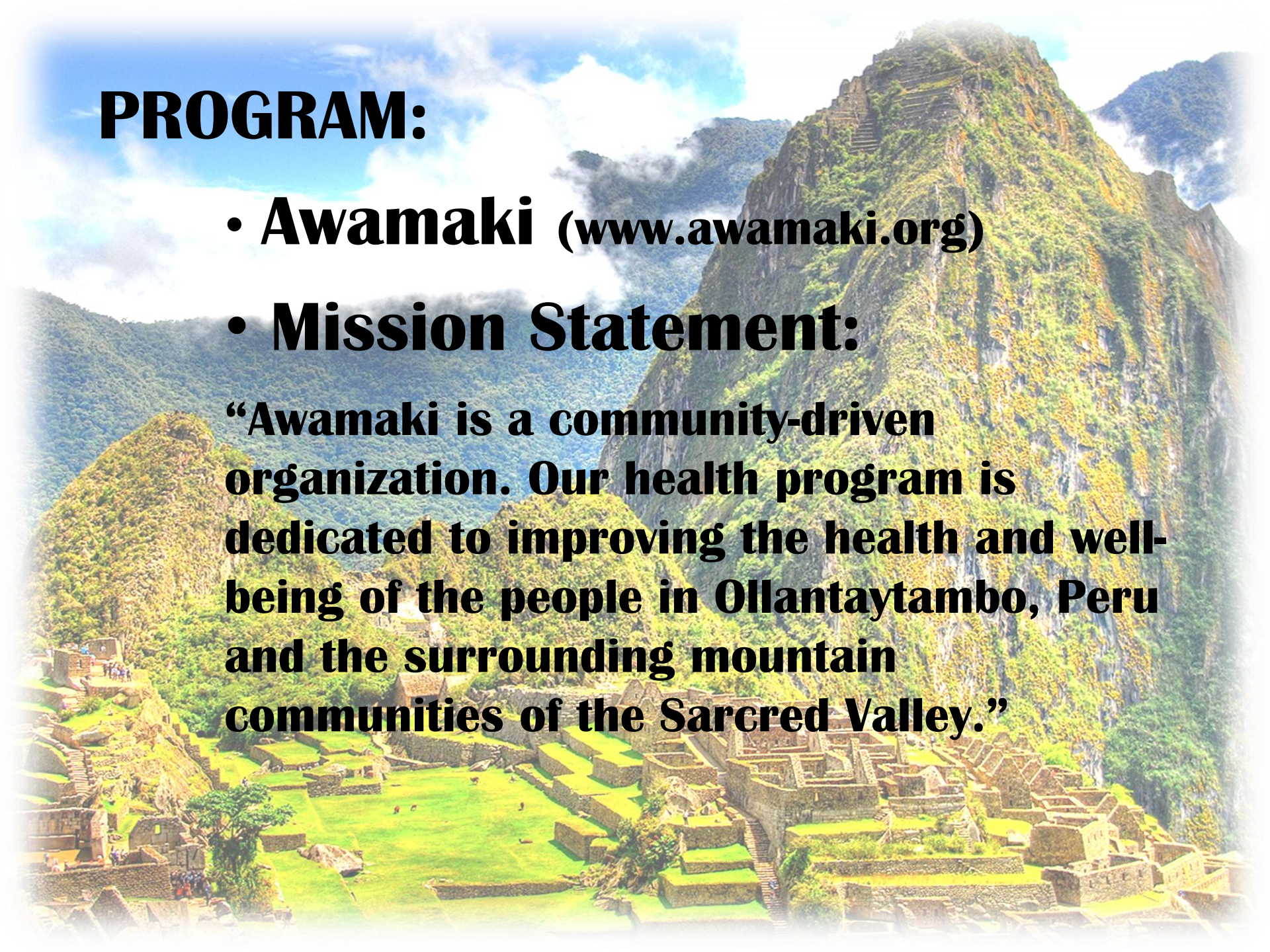


# **PROGRAM:**

- **Awamaki** ([www.awamaki.org](http://www.awamaki.org))

- **Mission Statement:**

**“Awamaki is a community-driven organization. Our health program is dedicated to improving the health and well-being of the people in Ollantaytambo, Peru and the surrounding mountain communities of the Sacred Valley.”**



# **MEDICAL TEAM:**

- **M1 Students (19-20)**
- **M4 Students (2)**
- **Physicians (1-2)**

# **GROUP GOALS:**

- **Provide free healthcare**
- **Public Health Education**
- **Sustainability Project**



# **TIMEFRAME:**

- **M1 Spring Break trip**
- **Feb. 24 – March 4, 2012**
- **Application deadline: Oct. 2, 2011**
- **1<sup>st</sup> weekend: Sacred Valley**
- **Monday - Friday: Work in clinics**
- **2<sup>nd</sup> weekend: Machu Picchu, Cusco**



# **TENTATIVE ITINERARY:**

**Day 1-3: Arrive in Cusco, transfer to Ollantaytambo**

**Day 4 (M): Meet early in the morning, head to rural, mountainous communities see patients in the afternoon. Home stays within communities.**

**Day 5 (T): Full day of seeing patients, home stays**

**Day 6 (W): Return to Ollantaytambo, sightsee**

**Day 7 (Th): Separate into groups between 3 clinics and see patients locally for the day health fair)**

**Day 8 (F): Machu Picchu**

**Day 9: Return to Cusco, free afternoon in Cusco**

**Day 10: Fly home- most flights leave in the morning**



# APPROXIMATE COST:

- **\$400 Program Fee**

- ✓ **Lodging (home stays)**

- ✓ **3 meals/day**

- ✓ **On-site transportation**

- ✓ **Airport pick-up**

- **Flight not included**

- ✓ **\$1,000-1,400 for flights\***

**\*Fundraising and group discounts may be available.**



